

62ND STREET TOWNHOMES

TH6

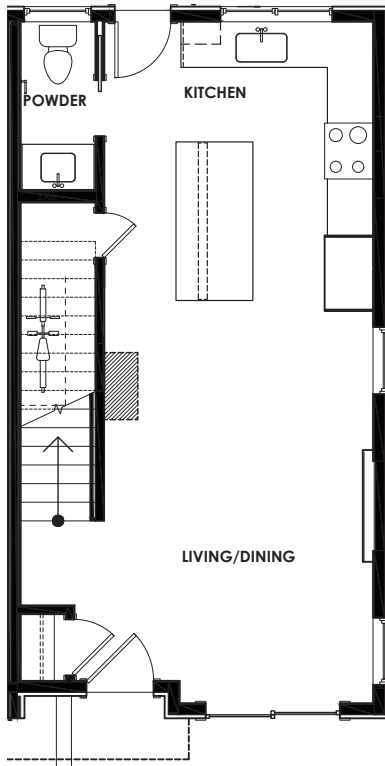
1740A NW 62nd Street

1,762 Sq Ft

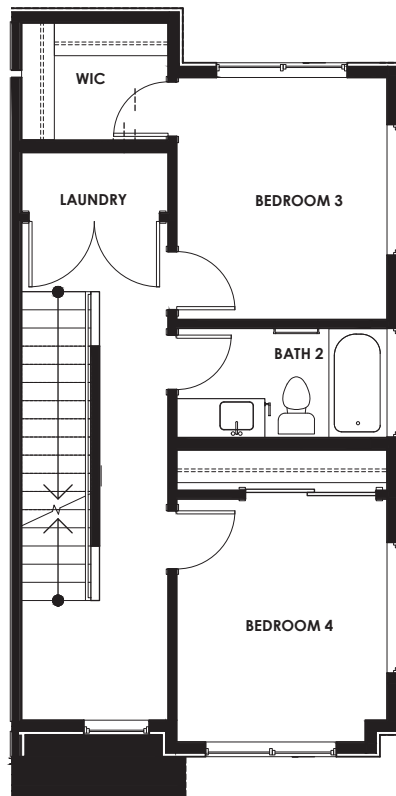
4 Beds

2.5 Baths

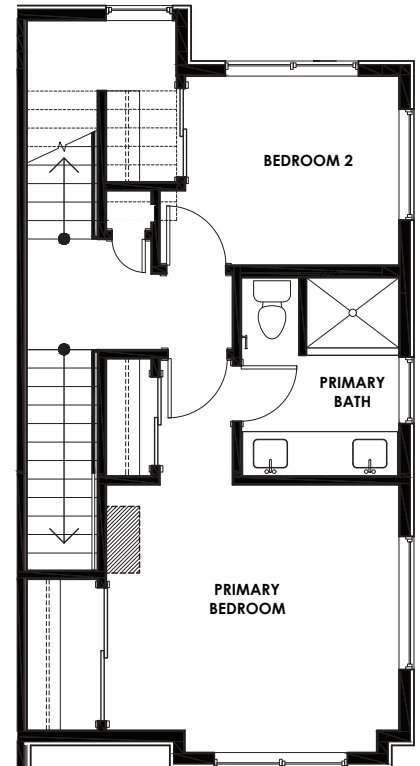
EV-Ready Parking



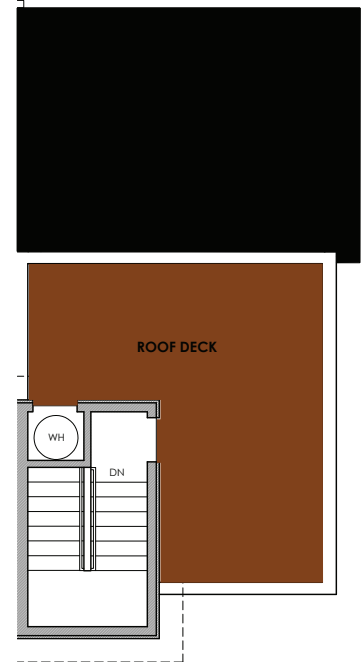
TH6 - Level 1



TH6 - Level 2



TH8 - Level 3



TH6 - Roof Deck

Seller reserves the right to modify or change plans, specifications, features, and prices without warning. Floor-plans, site plans, maps, and renderings may not be to scale. Interior surveyed square footage may vary from architectural square footage calculations.



OLSEN ANDERSON


Windermere
REAL ESTATE

Jed Kliman | 206-778-7665
jkliman@windermere.com